

**DeVry University's
Clinical Laboratory
Science program is the
breakthrough you've
been waiting for.**



If you have a superhero's concern for people and like spending time in the science lab, clinical laboratory science (CLS) could be the career field for you. A career in CLS will feed your passion for science and allow you to play an important role in patient care—without having to worry about your bedside manner.

There are many exciting industries and job opportunities to choose from. And as far as career outlook goes, this field offers plenty of opportunities. The need for trained clinical laboratory scientists is strong and likely to remain that way. Add to that the potential to make a healthy salary, and you're looking at what just may be the perfect career path for someone like you.

And you're in luck, because Phoenix is home to DeVry University, one of the rare institutions offering a Bachelor's degree program in Clinical Laboratory Science.

**Find yourself in a field you love
and on a path with a future.
At DeVry, we major in careers.**

**▶ The path to an exciting and fulfilling career
in clinical laboratory sciences starts here.**

DeVry University
Phoenix Campus
2149 W. Dunlap Ave.
Phoenix, AZ
85021-2995



**Discover the career of your dreams
right here in our laboratory.**



Clinical Laboratory Science program

**DeVry
University**
We major in careers.™

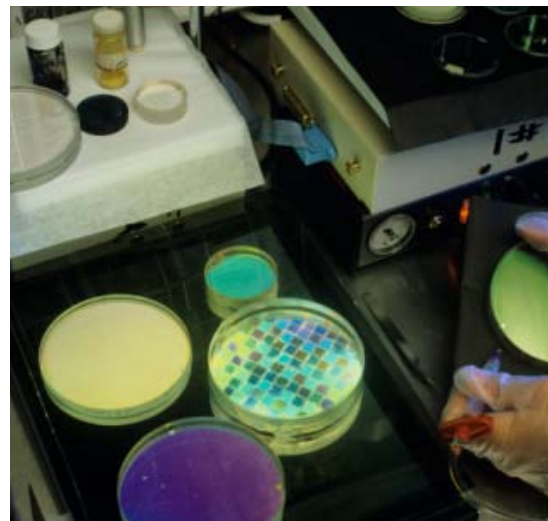
Identify a case of strep, diagnose a sick baby, save a diabetic's life—and get paid for it.

Clinical laboratory scientists perform heroic roles in healthcare every day. Modern medicine would be impossible without the tests they perform. It's that simple.

Clinical laboratory scientists play a critical role on healthcare teams by providing test results on which 70 percent of all diagnoses are made. They work in a wide range of industries and environments, analyzing and managing state-of-the-art tests. Strong science, computer and math skills are a must in this field.

If you're attracted to healthcare or health sciences and think you would prefer working with other health care professionals in a lab setting, this could be the field for you. You'll perform vital functions in the clinical laboratory as part of a dynamic team of healthcare professionals. Together you'll work to determine the absence, presence, or extent of disease and provide the data needed to evaluate the effectiveness of treatment. The tests you'll perform are critical to patient outcomes. That's why it's a field that can feed your desire to help others.

Fulfill your passion for science. Behind every test is a committed clinical laboratory scientist who cares. That person could be you.



The time is right for clinical laboratory scientists like you.

There is a huge shortage of qualified job candidates in the clinical laboratory science (CLS) field, which makes this a great time to start on your career path. In Arizona the average salary for clinical laboratory scientists with a bachelor's degree is \$47,710.* It pays to go into this field.

Industry experts project employment in CLS to grow 14 percent by 2016.† These numbers may not mean much to you now, but they can mean job security down the road. There's plenty of room to grow your career in the field of clinical laboratory science.

The route to today's exciting opportunities in CLS is a bachelor's degree.

A bachelor's degree in clinical laboratory science will provide you with the essential skills, knowledge and credentials for success.

Today it's becoming the norm for employers to require a bachelor's degree in order to perform advanced testing or move up to supervisory positions.

Having a bachelor's degree generally speeds advancement and leads to higher earnings potential. In Arizona, clinical laboratory scientists who have bachelor's or advanced degrees earn about 50 percent more than clinical laboratory technicians with associate degrees.*

You can do more in this field with a bachelor's degree. It's the credential that opens up opportunities to work for manufacturers of lab equipment, supplies, or home and laboratory diagnostic kits. It also qualifies you for careers in product development, marketing, or sales.

There are many exciting paths in this field but a bachelor's degree paves the way to the greatest opportunities.

DeVry University is Phoenix's best option for a bachelor's degree in CLS.

The need for clinical laboratory scientists is great, and the opportunities to earn a bachelor's degree in this field are rare.

DeVry University's Phoenix Campus provides you with an exceptional opportunity to earn your bachelor's degree in 36 months. DeVry offers a flexible way to earn your bachelor's degree in CLS with courses offered onsite and online. You can opt to complete a portion of your CLS degree online as well as experience hands-on learning in a classroom setting with the convenience of online education elements.

Our program prepares you for a good career in a hospital, diagnostic lab, doctor's office, research lab, government agency or pharmaceutical company. We emphasize real-world skills. You'll have hands-on learning opportunities and clinical internships at one of DeVry's partner labs. We teach you skills of the workplace and prepare you for the career challenges ahead in our brand new, state-of-the-art labs.

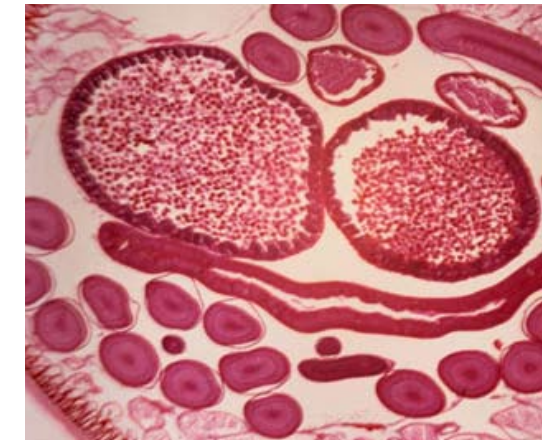
You don't have to go far to receive leading-edge training in CLS. At DeVry, you can earn a bachelor's degree from a respected university right here in Phoenix.

The list of career titles in clinical laboratory science grows every day.

- Analytical Chemist
- Bacteriologist
- Biochemist
- Blood Bank Technologist
- Chemist
- Crime Lab Analyst
- Cytotechnologist
- Food and Drug Inspector
- Medical Librarian
- Medical Equipment Sales Rep
- Microbiologist
- Parasitologist
- Pharmaceutical Sales Rep
- Public Health Specialist
- Quality Control Specialist
- Research Assistant
- Toxicologist

Employers needing clinical laboratory scientists are plentiful.

- Biotechnology Firms
- Centers for Disease Control
- Clinics
- Diagnostic Testing Companies
- Food and Drug Administration
- Government Agencies (Federal, State, County, Municipal)
- Health Maintenance Organizations
- Hospitals
- Medical Equipment Companies
- National Institutes of Health
- Peace Corps/Vista
- Pharmaceutical Companies
- Physicians Offices
- Private & Non-Profit Organizations
- Research Foundations
- State and Municipal Departments of Health
- U.S. Armed Services
- U.S. Department of Health and Human Services
- U.S. Department of Justice
- U.S. Department of State



Scientific reasoning will lead you to DeVry University.

DeVry provides you with the right combination of knowledge, practical skills, and credentials you need to succeed in the CLS field. But what really sets us apart is that we're focused on the same thing as you: your career.

We have what you're looking for in a university.

Recognized leader. A leader in technology-based education for more than 75 years, DeVry University prepares you for high-demand, high-paying careers in clinical laboratory science.

Employer approved. DeVry works with healthcare professionals and industry leaders to design programs that produce graduates who meet their needs. That's why a degree from DeVry University is widely respected by employers.

Career-focused education. DeVry offers an accelerated bachelor's degree program in CLS. Our curriculum is application-based—everything you learn applies directly to the clinical lab environment.

Learn-by-doing methodology. Real-world experience from lab studies and internships prepares our students to be productive from day-1 on the job.

Successful graduates. Over 90% of DeVry graduates system-wide in the active job market were employed in their fields of study within six months of graduation.† Become part of this great statistic by earning your bachelor's degree in Clinical Laboratory Science from DeVry University.

This is the medical breakthrough you've been waiting for.

Learn how to launch your career in CLS. Call the Phoenix Campus of DeVry University at 866.613.6179, or visit choosedevry.com/cls today.

DeVry
University
We major in careers.

*Source: Bureau Labor of Statistics, Occupational Outlook Handbook 2007

†Undergraduate students who have graduated since 1975.

DeVry University is accredited by The Higher Learning Commission of the North Central Association, www.ncahlc.org.

© 2008 DeVry University. All rights reserved.